



**Frank Porter Graham Elem**

**Rita Bongarten, Principal**  
 Rita Bongarten, Prior Principal  
 101 Smith Level Rd  
 Chapel Hill, NC 27516

(919) 942-6491  
 Grades PK-5  
 Regular School  
 Traditional Calendar  
 Title I  
 Chapel Hill-Carrboro Schools

**HIGH STUDENT PERFORMANCE**

**Performance of Students in Each Grade on the ABCs End-of-Grade Tests**

Percentage of Students' Scores At or Above Grade Level

|                   | Grade 3 |       | Grade 4 |       | Grade 5 |       | OVERALL |       |
|-------------------|---------|-------|---------|-------|---------|-------|---------|-------|
|                   | Reading | Math  | Reading | Math  | Reading | Math  | Reading | Math  |
| <b>Our School</b> | 80.2%   | 92.6% | 70.6%   | 85.3% | 78.9%   | 85.5% | 76.9%   | 88.0% |
| <b>District</b>   | 84.0%   | 93.2% | 86.7%   | 94.6% | 88.6%   | 93.5% | 87.3%   | 92.8% |
| <b>State</b>      | 67.6%   | 82.1% | 71.6%   | 83.8% | 72.3%   | 82.0% | 70.7%   | 82.4% |

N/A = Fewer than five students

**SCHOOL PROFILE**

**School Size**

The total number of students in this school and the average number of students in schools with similar grade ranges at the district and state levels.

|  | OUR SCHOOL | DISTRICT | STATE |
|--|------------|----------|-------|
|  | 461        | 528      | 497   |

**Average Class Size**

The average number of students enrolled in a "typical" K-8 classroom.  
 \* Legislation mandates that class sizes for grades 4-12 are not restricted for 2009-10 and 2010-11.  
 \* Due to data entry issues, some class sizes in select schools are unavailable for 2010-11.

|              | OUR SCHOOL | DISTRICT | STATE |
|--------------|------------|----------|-------|
| Kindergarten | 19         | 20       | 20    |
| Grade 1      | 17         | 19       | 19    |
| Grade 2      | 16         | 20       | 20    |
| Grade 3      | 21         | 21       | 20    |
| Grade 4      | 21         | 24       | 21    |
| Grade 5      | 19         | 24       | 21    |

**Performance of Each Student Group on the ABCs End-of-Grade Tests**

Percentage of Students, Grouped by Gender, Ethnicity, and Other Factors, Who Passed BOTH the Reading and Math Tests

|                         | Male  | Female | White | Black | Hispanic | Amer. Indian | Asian | Pacific Islander | Two or More Races | E.D.  | N.E.D. | L.E.P. | Migrant Students | Students with Disabilities |
|-------------------------|-------|--------|-------|-------|----------|--------------|-------|------------------|-------------------|-------|--------|--------|------------------|----------------------------|
| <b>Our School</b>       | 65.8% | 79.8%  | 92.3% | 41.4% | 51.2%    | N/A          | 63.3% | N/A              | 78.9%             | 42.4% | 91.4%  | 44.4%  | N/A              | 33.3%                      |
| <b># of tests taken</b> | 111   | 114    | 104   | 29    | 43       | N/A          | 30    | N/A              | 19                | 85    | 140    | 45     | N/A              | 24                         |
| <b>District</b>         | 84.0% | 87.2%  | >95%  | 58.8% | 65.2%    | 66.7%        | 88.4% | N/A              | 89.9%             | 56.4% | 95.0%  | 50.2%  | N/A              | 56.6%                      |
| <b>State</b>            | 64.6% | 69.5%  | 79.0% | 48.5% | 54.4%    | 55.1%        | 78.2% | 63.7%            | 69.3%             | 53.3% | 82.8%  | 34.4%  | 45.2%            | 34.4%                      |

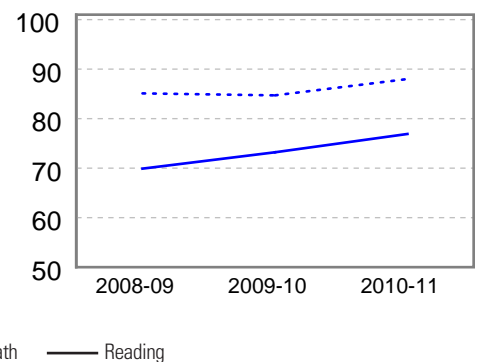
E.D. = Economically Disadvantaged  
 N/A = Fewer than five students

N.E.D. = Not Economically Disadvantaged

L.E.P. = Limited English Proficiency

**Three-Year Trend of Student Performance on the ABCs End-of-Grade Reading and Math Tests**

Percentage of students at or above grade level for the past three years.



To learn more about federal No Child Left Behind (NCLB) requirements, visit <http://www.ncpublicschools.org/nclb/>

For information about the ABCs of Public Education and Adequately Yearly Progress (AYP), visit <http://www.ncpublicschools.org/accountability/>

**SAFE, ORDERLY AND CARING SCHOOLS**

**School Safety**

The number of acts of crime or violence reported below includes all acts occurring in school, at a bus stop, on a school bus, on school grounds, or during off-campus, school-sponsored activities.

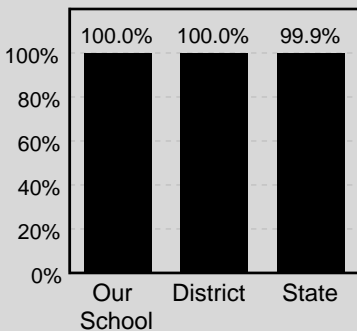
Out of 461 students in our school, there were a total of 0 act[s] of crime or violence.

**The number of acts of crime or violence reported per 100 students:**

|                   |      |
|-------------------|------|
| <b>OUR SCHOOL</b> | 0    |
| <b>DISTRICT</b>   | 0.06 |
| <b>STATE</b>      | 0.26 |

**Access to Technology**

Percentage of classrooms connected to the Internet



**Keeping you informed**

More information about your school is available on the NC School Report Cards website at: <http://www.ncreportcards.org>

**HIGH STUDENT PERFORMANCE, CONTINUED**

**School Performance**

Each year, schools in North Carolina may receive several designations based on their performance on the state's ABCs tests. These designations are awarded on the basis of the percentage of students performing at grade level and on whether students have learned as much as they are expected to learn in one year. The designations earned by your school are displayed below, followed by a brief description of each designation.

**Our School's Designation(s):** School of Distinction, High Growth

| DESIGNATION                | PERFORMANCE:<br>STUDENTS PERFORMING AT GRADE LEVEL   | GROWTH:<br>LEARNING ACHIEVED<br>IN ONE YEAR |                 |                              | PERCENT OF SCHOOLS<br>WITH DESIGNATION |       |
|----------------------------|--|---|-----------------|------------------------------|--|-------|
|                            |  | High Growth                                 | Expected Growth | Expected Growth Not Achieved | DISTRICT                               | STATE |
| HONOR SCHOOL OF EXCELLENCE | At least 90% of students at grade level and the school made adequate yearly progress (AYP) |   |                 |                              | 30%                                    | 8%    |
| SCHOOL OF EXCELLENCE       | At least 90% of students at grade level  |   |                 |                              | 20%                                    | 1%    |
| SCHOOL OF DISTINCTION      | At least 80% of students at grade level  | ✓   |                 |                              | 50%                                    | 28%   |
| SCHOOL OF PROGRESS         | At least 60% of students at grade level  |   |                 |                              | 0%                                     | 38%   |
| NO RECOGNITION             | 60 to 100% of students at grade level  |   |                 |                              | 0%                                     | 15%   |
| PRIORITY SCHOOL            | 50 to 60% of students at grade level, OR Less than 50% of students at grade level          |   |                 |                              | 0%                                     | 11%   |
| LOW PERFORMING             | Less than 50% of students at grade level   |   |                 |                              | 0%                                     | 0%    |

**Adequate Yearly Progress (AYP) Results**

North Carolina has set target goals that schools must meet to make Adequate Yearly Progress (AYP) under the federal No Child Left Behind (NCLB).

Our school did not make adequate yearly progress.  
Our school met 19 out of 21 AYP targets.

In any group where the percentage of students at a grade level is greater than 95% or less than 5%, the actual values are not displayed because of federal privacy regulations. In these cases the results are shown as >95% or <5% for the group.

**QUALITY TEACHERS**

|                   | Total Number of Classroom Teachers* | Fully Licensed Teachers | Classes Taught by Highly Qualified Teachers | Teachers with Advanced Degrees | National Board Certified Teachers* | Years of Teaching Experience |            |           | Teacher Turnover Rate |
|-------------------|-------------------------------------|-------------------------|---|--------------------------------|------------------------------------|------------------------------|------------|-----------|-----------------------|
|                   |                                     |                         |   |                                |                                    | 0-3 years                    | 4-10 years | 10+ years |                       |
| <b>Our School</b> | 43                                  | 100%                    | 100%  | 42%                            | 13                                 | 21%                          | 26%        | 54%       | 14%                   |
| <b>District</b>   | 43                                  | 99%                     | 100%  | 41%                            | 12                                 | 23%                          | 27%        | 51%       | 10%                   |
| <b>State</b>      | 34                                  | 99%                     | 100%  | 29%                            | 6                                  | 18%                          | 33%        | 49%       | 10%                   |

\* The total number of teachers in this school and the average number of teachers in schools with similar grade ranges at the district and state level.

